

zilenziO

Selling silence

Installation instruction - Dezibel bordsskärm

Begin to fix screen on the desk or other flat surface.

Then screw the table bracket on the designated points on the screen with the supplied threaded screws.

When mounted on the table with bevelled edges so used seized 809 on the front screen. Should it be mounted side screen together with the front screen, then use a bracket 817 at the corner where the wings meet and a 809 at the other end.

"These brackets are screwed under the table"

When all brackets are in place so it's just to hook the screen onto the table and then tighten the screw with a plastic cap that sits screen.

You can then adjust the monitor angle using the other screw.

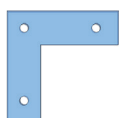
Assemble the side and front screen.

Plexi seized 90: Fit side screen in the same way as above.

The side screen is 4 cm longer to intersect with the front screen.

Once this is done, place the bracket on top of the screens and screw it with 3 supplied screws.

Magnetic Fasteners: Install the side screen in the same way as above, and it will automatically click together with the front screen. The magnet sits on both sides to the screen fits on both sides of the front screen.



Plexi fittings 90°
art 818



Table mount 816

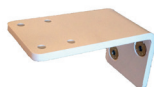


Table mount 809



Table mount 817

